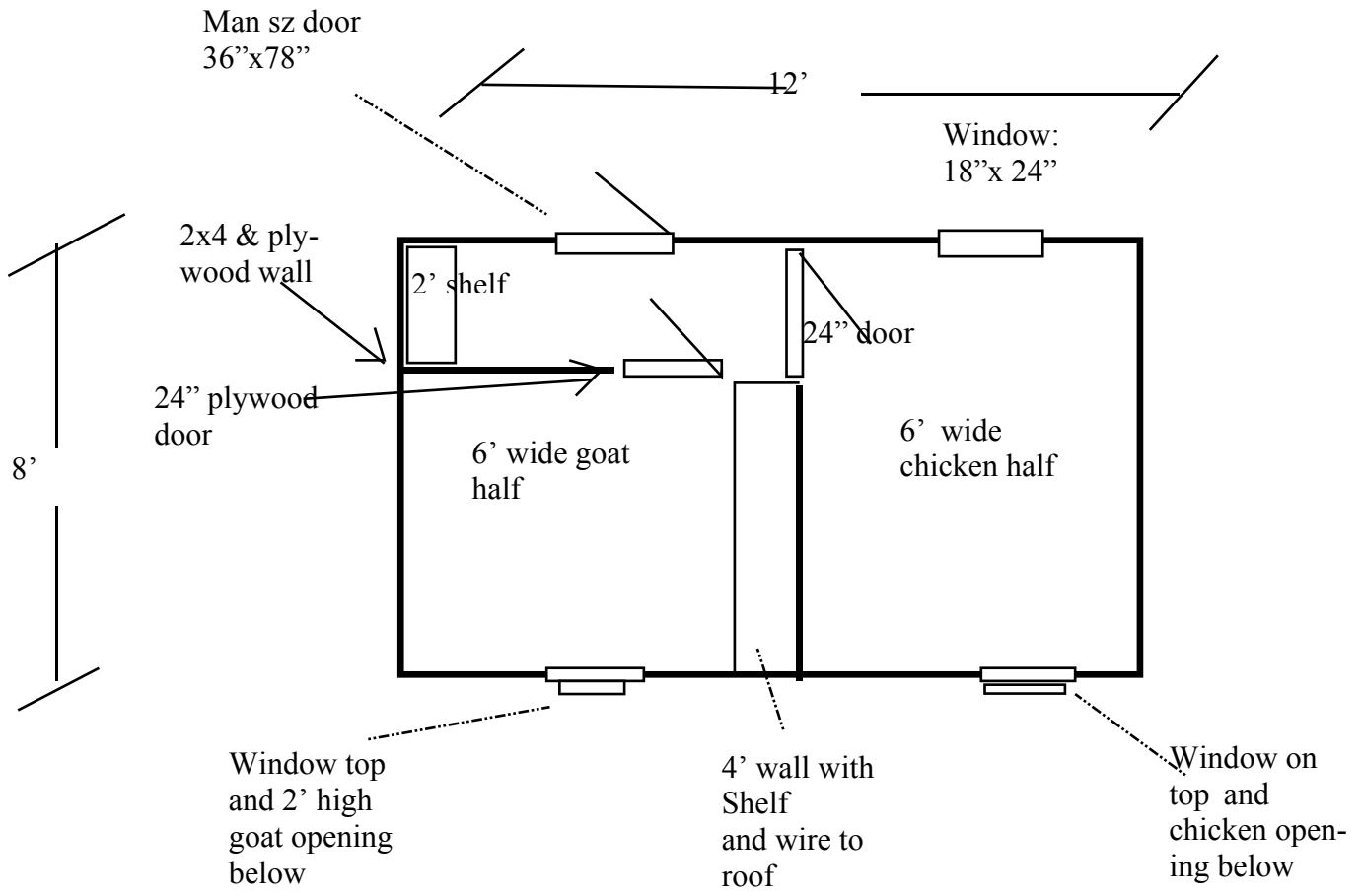


8'x12' chicken/ goat barn
T-111 siding



Asphalt shingles, 5/8th plywood floor, 2x4 framing 16oc, 2 18" x24" windows in rear and one 18"x24" window in front, wire partition to separate the 2 halves. It goes from the top of the shelf to the top of the building. Sub roofing is 1/2" plywood. Perch included.

Optional metal 10 hole nest .

Kitted it would be on a 4'x4' skid

Fully assembled the bottom is 4x4 shipping rails top of 2x4's pressure treated.