



Rectangle vinyl gazebo

### REQUIRED TOOLS (not provided)

Cordless or electric screw gun(s)  
Step ladders  
Level  
12' 4x4 post or two 2x4s for  
propping roof sections  
11" vise clamps and/or  
C-clamps  
Hammer  
Utility knife  
Measuring tape  
Prybar  
Pencil or pen  
7/16" socket or wrench  
3/4" drill bit

### HARDWARE FOR ASSEMBLY (provided)

- 2 1/2" screws** Use to:
- Fasten joist together
  - Fasten posts to outside joist
  - Fasten rafter headers
  - Fasten roof sections to top railing
- 2" screws** Use to
- Screw down remaining deck boards
  - Fasten rafters together
  - Fasten railings to posts
  - Fasten skirt board trim

**NOTE: Caution See note 1 on page 8**

- 1/4" x 6" lags with washers** - Use to
- Fasten posts to outside joist

### KIT ASSEMBLY INSTRUCTIONS

We have designed these instructions as a stepby step procedure to simplify the assembly process. Nevertheless, we do recommend including someone with carpentry expertise on your crew.

#### BEFORE YOU START

Please read the entire set of instructions before you start to assemble your gazebo. Also, make sure that your site has been properly prepared and leveled.

#### TABLE OF CONTENTS

##### Section 1 ASSEMBLING GAZEBO FLOOR

- Step 1** Laying out floor sections **p2**
- Step 2** Laying out remaining deck boards **p2**

##### Section 2 ERECTING POSTS & RAILINGS

- Step 3** Inserting posts in pockets **p3**
- Step 4** Installing bottom & top railings **p3**
- Step 5** Fastening skirt boards **p4**

##### Section 3 ASSEMBLING ROOF

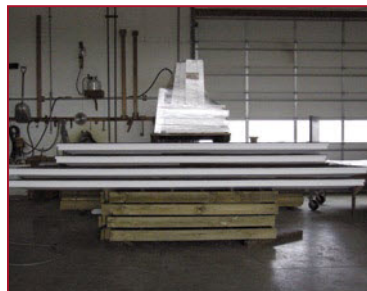
- Step 6** Positioning roof sections **p4**
- Step 7** Installing roof sections **p5**
- Step 8** Fastening rafter plates & ceiling ties **p6**

##### Section 4 INSTALLING ROOF SHINGLES & OPTIONAL CUPOLA

- Step 9** Installing hip capping **p6**
- Step 10** Installing optional cupola **p6**

##### Section 5 INSTALLING OPTIONAL SCREENING & DOOR

- Step 11** Installing screen door **p7**
- Step 12** Installing screen panels **p7**



Rectangle gazebo kit unwrapped

**CAUTION** Be sure you have enough help before starting to unpack your kit because some sections are heavy. Take extra care to prevent gazebo parts or sections from falling.

### ASSEMBLING GAZEBO FLOOR **Section 1**



Figure 1a



Figure 1b



Figure 1g



Figure 1h

#### **step 1** Laying out floor sections

Arrange the floor sections in place, as they are numbered (Figure 1a). (You'll find the numbers towards the center, on top of the joist.) Before assembling, be sure to place the door opening(s) correctly.



Figure 1c

Align the corners and top of the joists, then use vise clamps to hold the joists together (Figures 1c, 1d, 1e and 1f). Then, using 2 1/2" screws, fasten the joists together, at the outside first, then the center. Use four screws, two from each side (Figure 1g).

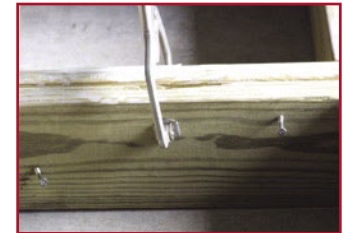


Figure 1d

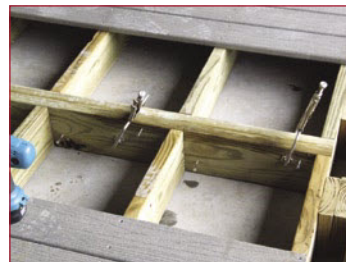


Figure 1e



Figure 1f

#### **step 2** Laying out remaining deck boards

Lay remaining deck boards in place, keeping nicest side of the wood up. Use 2" screws to fasten boards to the joist. If needed, pre-drill pilot holes to prevent splitting.

**IMPORTANT** If your gazebo has an electrical package or receptacles, do not fasten remaining deck boards until posts are in place because you may need access under the floor to connect wiring.

Fasten the "border" deck boards in place, keeping the corners aligned (Figures 1b and 1h).

**NOTE** If you ordered your gazebo with a doorway on the gable wall, be sure to place the doorway-related deck board and post pockets correctly.

### ERECTING POSTS & RAILINGS *Section 2*

#### step 3 Inserting posts in pockets

Insert posts into pockets until vinyl sleeves rest on the floor—keeping doorway positions in mind (Figure 2a). Be sure that the top of the posts are level with the top of the vinyl sleeves.

If you have an optional electrical package, position the posts that will support the wiring and receptacles in the right place and facing the right way. Figure 2b shows a post channeled for wiring.

Do not fasten posts yet.

#### step 4 Installing bottom & top railings

Lay out the bottom railing, keeping in mind the correct doorway position(s). Fasten all the bottom railings to the posts using painted 2" screws four on each board eight per railing (Figures 2d and 2e) **NOTE: Caution See note 1 on page 8.** The bottom of the end boards (legs) will rest on the floor. Keep the railing legs centered on the post.

**TIP** Do not countersink the screws—a flush-driven screw is more appealing.

Install all top railing sections using four 2" screws on each side (Figures 2f and 2g) **NOTE: Caution See note 1 on page 8.** Be sure to align the top of each railing section with the top of each post.

**NOTE** If you purchased a screen kit, be sure to put the top railing with no brace where you will place the doorway .

Figure 2a

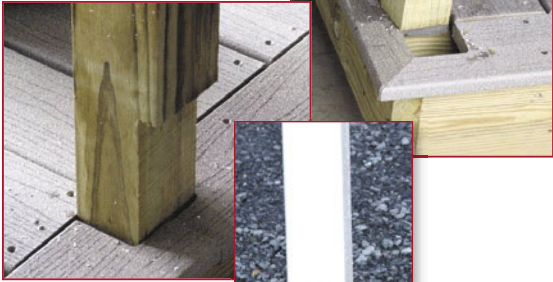


Figure 2b

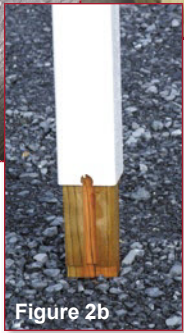


Figure 2c



Figure 2d

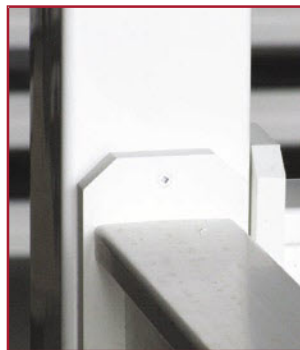


Figure 2e



Figure 2f



Figure 2g

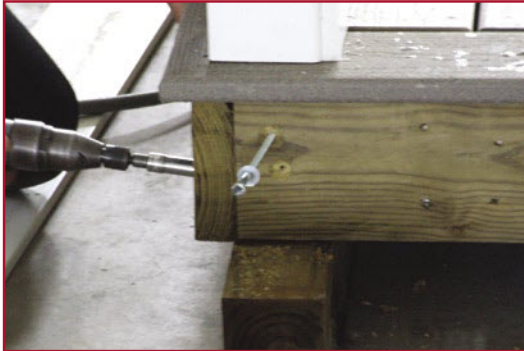


Figure 2g



Figure 2h

### step 5 Fastening skirt boards

With all the railings fastened in place, drive 2 1/2" screws from the outside skirt board into the posts, two on each side, four per post (Figures 2g and 2h). To insure that the screen door will fit properly, adjust each post at the doorway opening at the bottom (if possible) so that it measures the same as the top. Pre-drill two holes, one on each side, then drive two 1/4"x 6" lags into the post.

**TIP** You'll need a 3/4" bit to countersink the lag screw hole so you'll be able to fasten the trim flush against the skirt board.

Fasten the skirtboard trim using painted 8"x2" screws. Use two screws about every 16" (Figure 2i). Be sure to keep the corners aligned.



Figure 2i

## ASSEMBLING ROOF Section 3

### step 6 Positioning roof sections

**CAUTION** Be sure you have enough help because some of the roof sections are quite heavy.

**NOTE** The roof panels are numbered 1 to 8; you'll find the markings towards the top. (It's very important to set them up in the proper order!)

Set one large panel first, putting the rafter plate (2x8 boards at the bottom of each roof section) at the corner of each post and inset about 1 1/2" (Figure 3a).

Use vise clamps to hold the roof section in place, then drive 2 1/2" screws into the rafter plate. Drive the screw upwards, right inside the spindles of the top railing—one close to each post.

Make sure the outside of the rafter plate is aligned and parallel with the top of the railing before you fasten any screw. Once all roof panels are fastened together, you may need to loosen these screws to properly position the entire roof.



Figure 3a

### step 7 Installing roof sections

Using one or more posts of the right height—either a 4x4 or two 2x4s screwed together—carefully brace up the roof panel at the center (Figure 3b). Temporarily fasten the post(s) to the roof panel and the floor so the brace can't be pushed out.

**NOTE** Leave the brace in place until the roof is completely fastened and the roof capping is installed.

Set the second large roof panel, clamp the headers together, then position in place (Figures 3d and 3e). Using 2 1/2" screws, fasten the headers together. Use four screws, two from each side at each rafter (Figure 3c). Then temporarily fasten or clamp the bottom to the top railings.

Set one end roof panel; align the corners; clamp together using 2" screws; then fasten the roof sections together using two screws about every 16" (Figure 3f). Repeat for the other end roof panel.

When the roof panels are fastened together properly, check that the overhang at all four corners is the same. If not, loosen the screws you have fastened, shift the roof accordingly, then fasten screws at each corner up into the rafter plate.



Figure 3b



Figure 3d



Figure 3e



Figure 3c



Figure 3f



Figure 3g



Figure 3i



Figure 3j



Figure 4a



Figure 4b



Figure 4c

### step 8 Fastening rafter plates & ceiling ties

Finish fastening the top rails to the rafter plate, one 2 1/2" screw at the inside of every other spindle (Figures 3g and 3h). Be sure to measure and adjust the posts in or out before clamping and fastening so the overhang is the same all along the wall.



Jmkyvi 71

Depending on the size of the gazebo, your kit will include ceiling ties. Using three 2 1/2" screws on each side, fasten the ceiling ties onto the rafter—generally one ceiling tie for every other rafter. Keep the same distance to the floor on each side (Figures 3i and 3j).

## INSTALLING ROOF SHINGLES & OPTIONAL CUPOLA Section 4

### step 9 Installing hip capping

To install the hip capping, use only 3/4" nails or staples so the fasteners will not protrude through the underside of the roof.

Install the starter cap, then proceed with the rest of the capping (Figures 4a and 4b).

**NOTE** At the top, where the hips come together, carefully install the capping so you eliminate any potential leakage. Some caulking may be required.

### step 10 Installing optional cupola

If you purchased a cupola with your gazebo, use four 2" screws in the predrilled holes to fasten the cupola to the roof, making sure to center it (Figure 4c).

### INSTALLING OPTIONAL SCREENING & DOOR Section 5



Figure 5a



Figure 5b

Figure 5e Interior of screen door with hardware installed



#### step 11 Installing screen door

With the help of another person, carefully set the door in place. Using three painted 2" screws, drive the screws into the upper rail section (Figure 5a). Then use five painted 2 1/2" screws to fasten the jamb into the post, keeping the same reveal from the top down to the floor (Figure 5c).

**TIP** You may want to fasten the hinge side first.

For the door closure, use a philips-head screw driver to adjust the tension until you arrive at the desired door-closing strength (Figure 5d).



Figure 5c



Figure 5d



Figure 5f

#### step 12 Installing screen panels

With the help of another person, set two screen panels in place. Then use four 2" screws to fasten a retainer strip to the post (Figure 5f). Proceed one panel at a time until completed.

**NOTE** The L-shaped retainer strip belongs on either side of the door

Figure 5h A rectangle corner strip

At each corner, use four 2- " screws to install a corner strip, driving the screws into the corner post (Figures 5i and 5j).



Figure 5g Closeup of T-retainer strip (left) and L-retainer strip



Figure 5i Two screen panels spaced in place before corner strip is installed

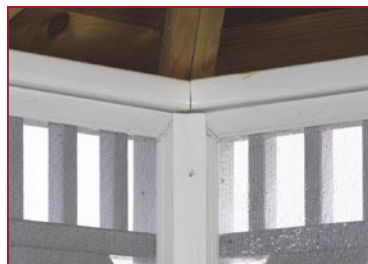
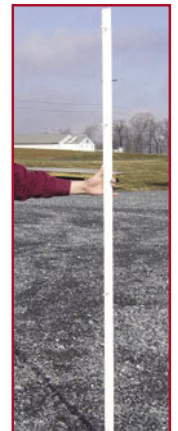


Figure 5j Corner strip installed, securing screen panels



§ § §

**Congratulations! You've finished assembling your gazebo.**

*Note:*

*1)Exception: If you order design post on your vinyl gazebo you will need to use 2 1/2” self drilling Phillips head screws to fasten the railings to the post and also to fasten the screen retainers.*